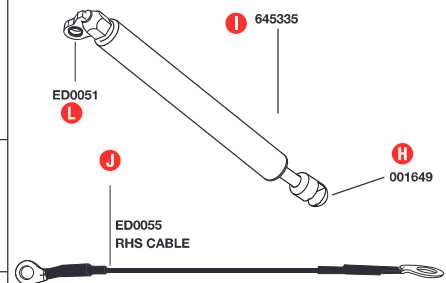




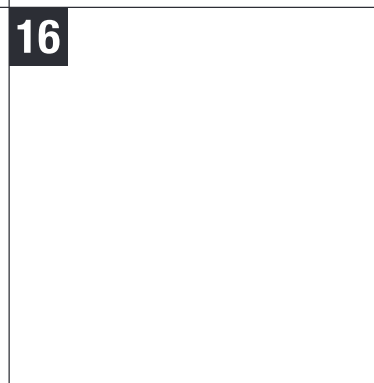
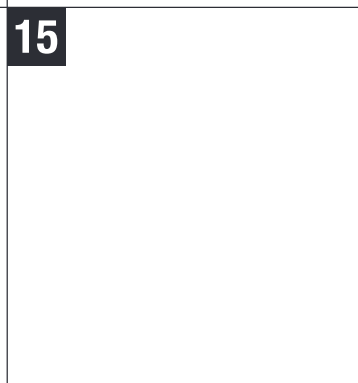
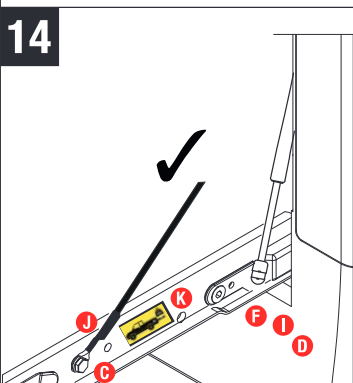
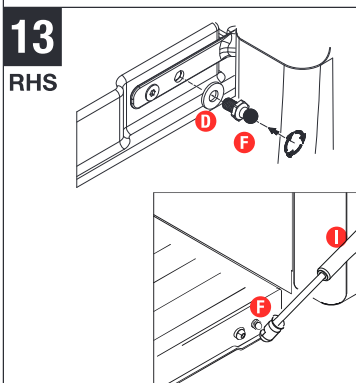
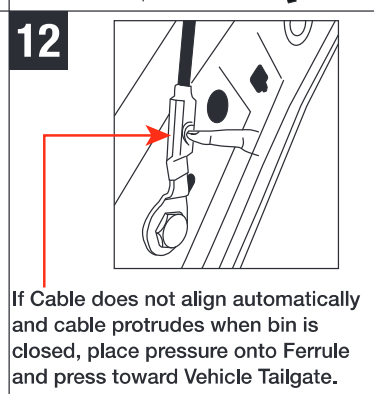
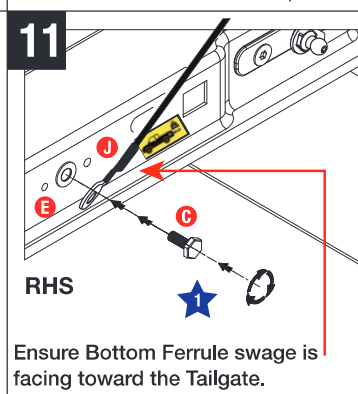
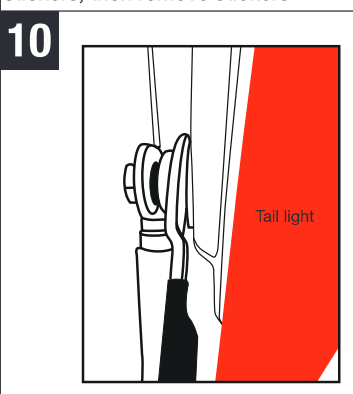
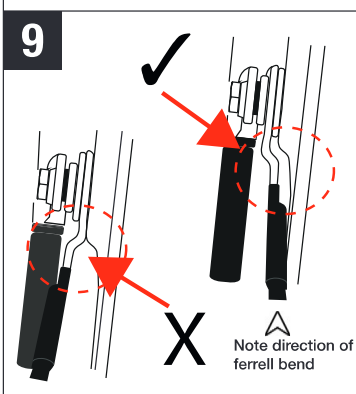
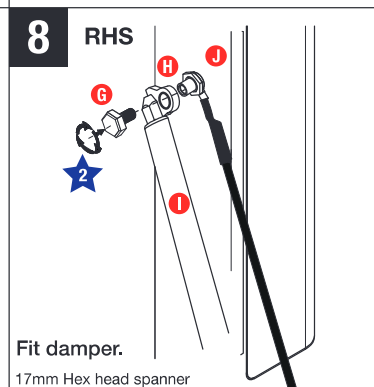
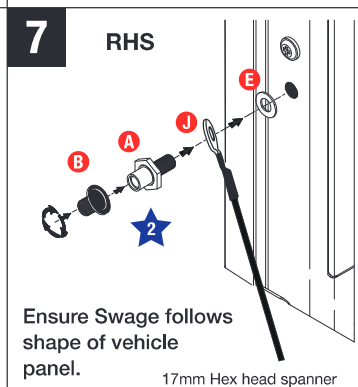
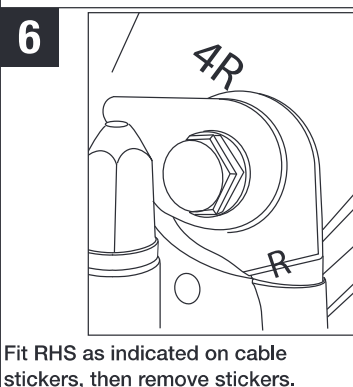
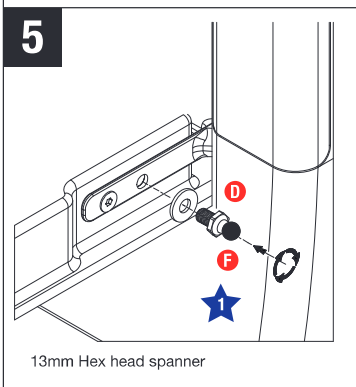
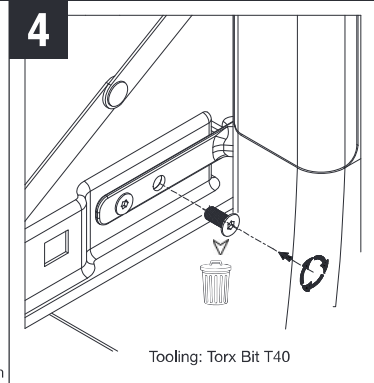
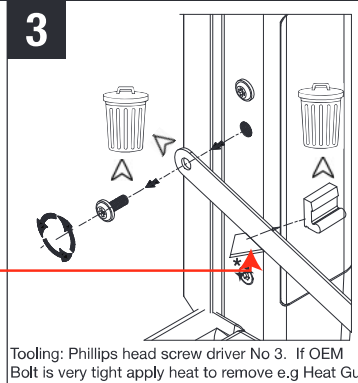
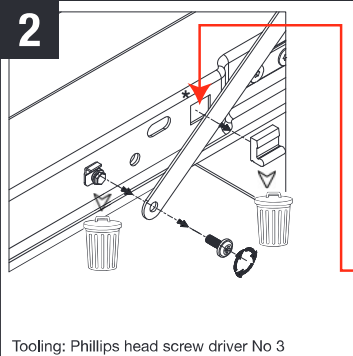
A ED0052 17mm Hex Head/ torque wrench	B ED0056	C ED0054 17mm Hex Head/ torque wrench	K
D ED0508	E ED0308	F 8442LT	G ED0059 10mm Spanner



EZDown Reloaded Instruction
- 1st Fitment

EZDown Reloaded Hilux/Revo 2016 - RL0050

1
RHS and LHS are determined when sitting in the Drivers side of the Vehicle.
NB: Locktite all fixing/mounting points where applicable.
After full fitment remove labels from the cable.



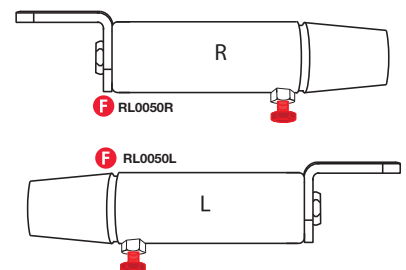
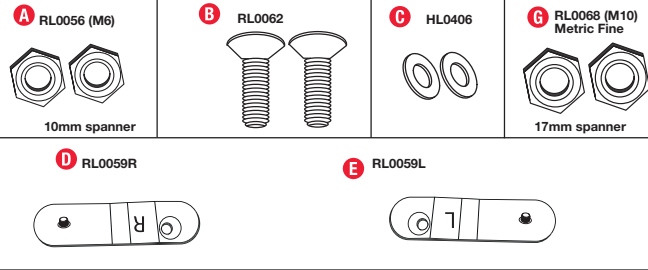
FITTING CODE	MANUFACTURER	MODEL TYPE	YEAR	STOCKIST	PRODUCT	REVISION	LABOUR	DATE	PAGE
RL0050	TOYOTA	REVO	2016 onwards	GENERAL USE	EZDOWN RELOADED	5	25min	19/05/2020	1
TORQUE - N.m		★ 27N.m±2N.m		★ 15N.m±2N.m		www.ezdown.co.za			

NB: After installation please close tailgate gently to ensure that there is no interference with any hardware.

IMPORTANT:

No liability will be incurred by Industrial Specialised Applications company, for injury, death, or property damage caused by a product which has been set up, operated, and/or installed contrary to EZDown installation guide/manual, or which has been subjected to misuse, negligence, or accident, or which has been repaired or altered by anyone other than Industrial Specialised Applications, or which has been used in a manner or for a purpose for which the product was not designed.





EZDown Reloading Instruction
- 2nd Fitment

EZDown Reloading ALPEx 4 X 4

1
Right Hand Side (RHS) and Left Hand Side (LHS) are determined when sitting in the Drivers side of the Vehicle.

CAUTION:
Do not remove the red bolt from cylinder E until fully installed - if you do you will lose the pre-tension.

2
Open tailgate.
See slide 4 - 6 for area where nut G needs to be fitted.

3 RHS
Tailgate
NB: View direction from inside the Vehicle Bin looking towards the Tailgate
Remove the bolt on the bracket and throw away.

4
Tailgate
NB: View from inside vehicle looking out.
Insert bracket and fasten M8 capscrew

5
Test fit cylinder to check alignment with the bracket.

6 Ensure both Brackets as indicated with * are in alignment.
Adjust the alignment by a few degrees in order to correct the parallel alignment of the end bolt if needed

7
Remove cylinder to continue

8
Remove taillights as follows
Remove the two bolts on RHS & LHS.
Once the bolts are removed the taillights will clip out from the vehicle body.

9
Taillight cavity
NB: Make sure that the tailgate moves freely

10 While one person holds this bolt in place using a socket extension with the tailgate open.
NB: Two persons are required to carry out the installation and tightening of the locking nut F.
NB: Make sure that the tailgate moves freely

11 The 2nd person to gain access underneath the LHS taillight and tighten the M10 locking nut F over the thread of this existing bolt making sure that this is tightened as securely as possible (Please observe Torque *3 for Nut)

12
Cylinder slides over the bolt on the bracket and then over the stud D.
Make sure these are parallel to each other
Ensure cylindrical locks flush onto the nut.

13
NB: Must be Parallel
Fix washer and M6 Nut onto stud and fasten when tailgate is still open.

14
REMOVE RED BOLT

15
Repeat slides 3 to 14 for LHS.

16
NOTE:
Tailgate will fall very slowly the first cycle in order for the Reloading to set.
SHOULD YOU WANT TO INCREASE YOUR PRELOAD OR REINSTALL YOUR PRELOAD PLEASE RETURN TO YOUR CLOSEST STOCKIST FOR ASSISTANCE

FITTING CODE	MANUFACTURER	MODEL TYPE	YEAR	STOCKIST	PRODUCT	REVISION	LABOUR	DATE	PAGE
RL0050	APEX 4X4	REVO	2016 onwards	GENERAL USE	EZDown RELOADED	8	25min	21/09/2020	1
TORQUE - N.m		★ 27N.m±2N.m		★ 15N.m±2N.m		www.ezdown.co.za			

NB: After installation please close tailgate gently to ensure that there is no interference with any hardware.

IMPORTANT:
No liability will be incurred by Industrial Specialised Applications company, for injury, death, or property damage caused by a product which has been set up, operated, and/or installed contrary to EZDown installation guide/manual, or which has been subjected to misuse, negligence, or accident, or which has been repaired or altered by anyone other than Industrial Specialised Applications, or which has been used in a manner or for a purpose for which the product was not designed.

