



# MITSUBISHI L200 DOUBLE CAB 2019



**20 Min.**

Item Code

**Codice Articolo SLF/460/IX**

Reference Article

**GB**

**STAINLESS STEEL  
SLASH FRONT PROTECTION**

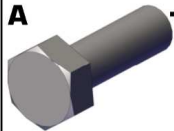



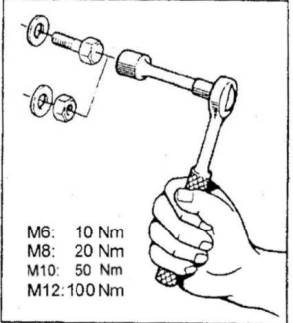
**ITA**

**PROTEZIONE ANTERIORE  
SLASH IN ACCIAIO INOX**

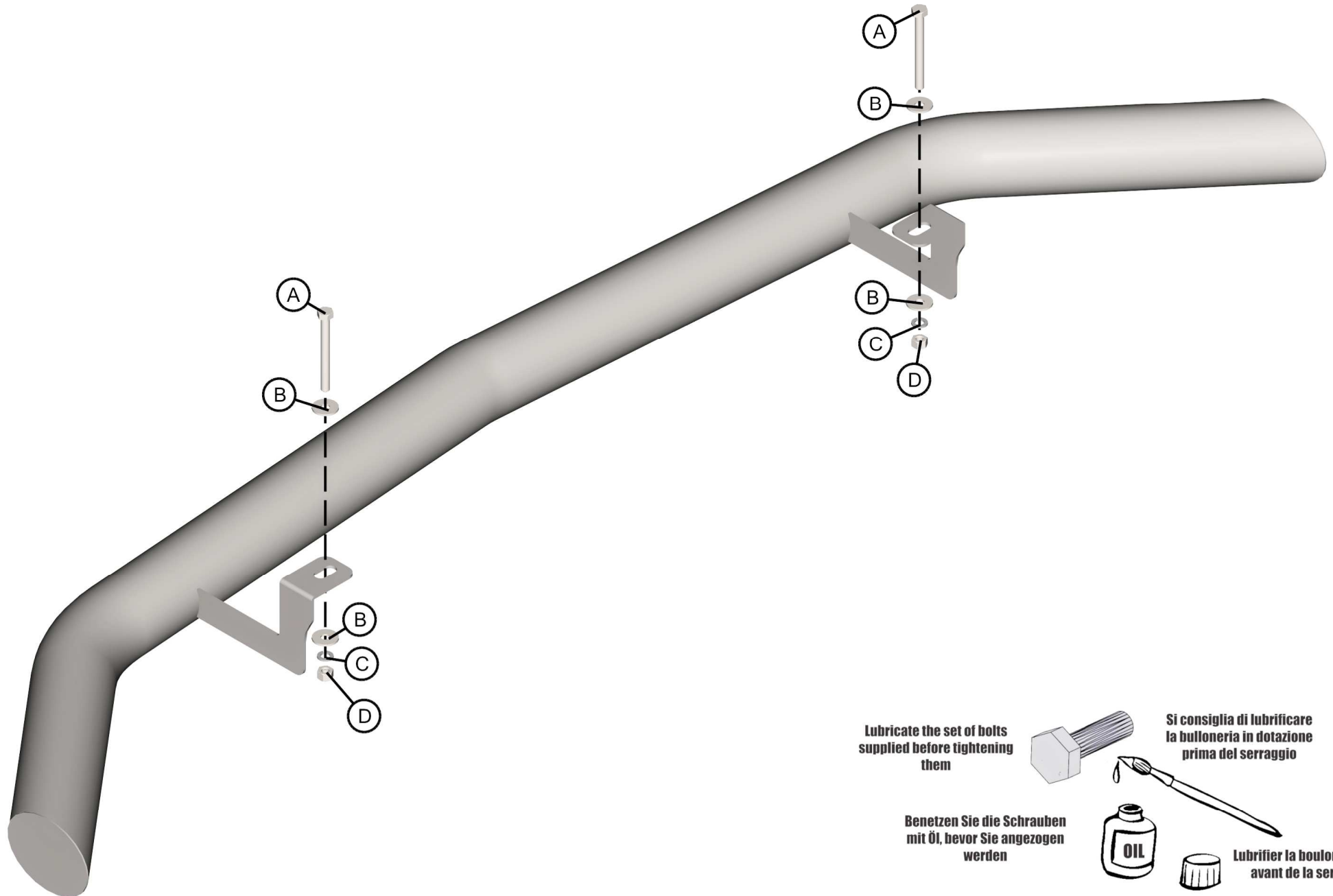
**FR**

**PROTECTION ANTERIEURE  
SLASH EN ACCIER INOX**

# MITSUBISHI L200 DOUBLE CAB 2019

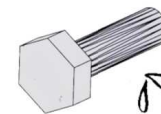
Part List Lista della bulloneria Liste des pièces				
<b>A</b>  <b>TE M8X140</b> <b>X 2</b>	<b>B</b>  <b>Ø 8</b> Big Grandi Grand <b>X 4</b>	<b>C</b>  <b>Ø 8</b> <b>X 2</b>	<b>D</b>  <b>M 8</b> <b>X 2</b>	 <p>M6: 10 Nm M8: 20 Nm M10: 50 Nm M12: 100 Nm</p>

# MITSUBISHI L200 DOUBLE CAB 2019



Lubricate the set of bolts supplied before tightening them

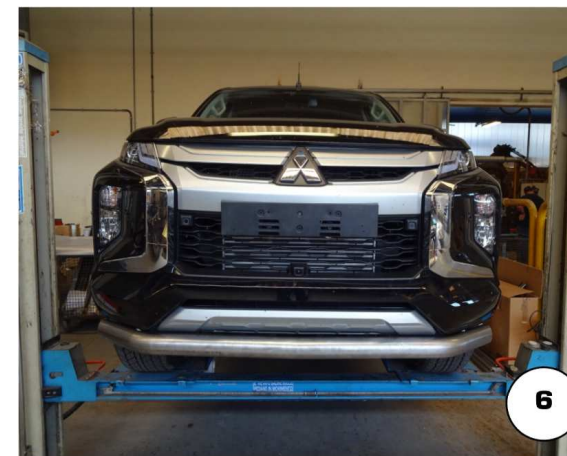
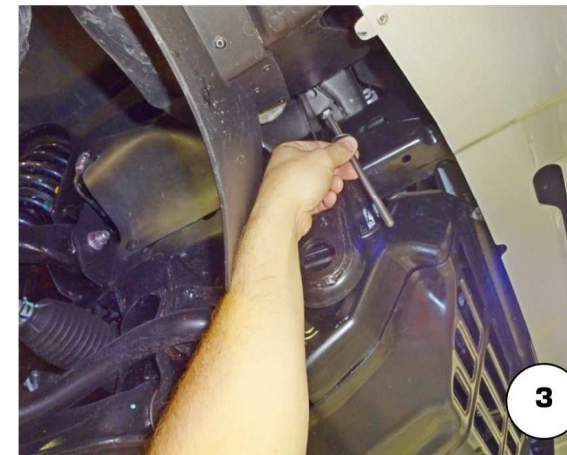
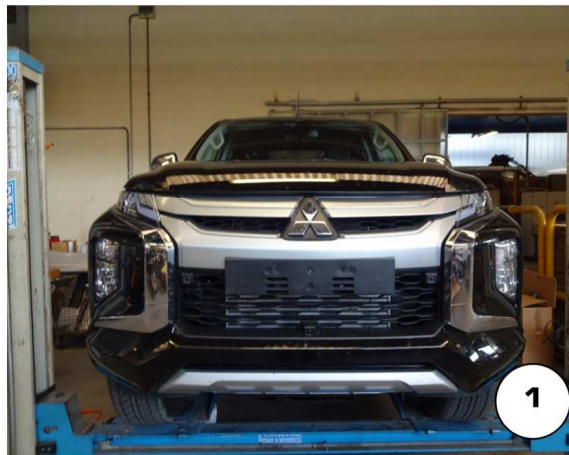
Benetzen Sie die Schrauben mit Öl, bevor Sie angezogen werden



Si consiglia di lubrificare la bulloneria in dotazione prima del serraggio



Lubrifier la boulonnerie avant de la serrer



Date Data Date	Item Code Cod. Articolo Réf. Article	Vehicle model Modello Veicolo Modèle de Voiture
07/10/2019	SLF/460/IX	MITSUBISHI L200 DOUBLE CAB 2019

Document checked and approved by  
 Documento controllato ed approvato da  
 Document contrôlé et approuvé par

**BOTTA PIETRO**